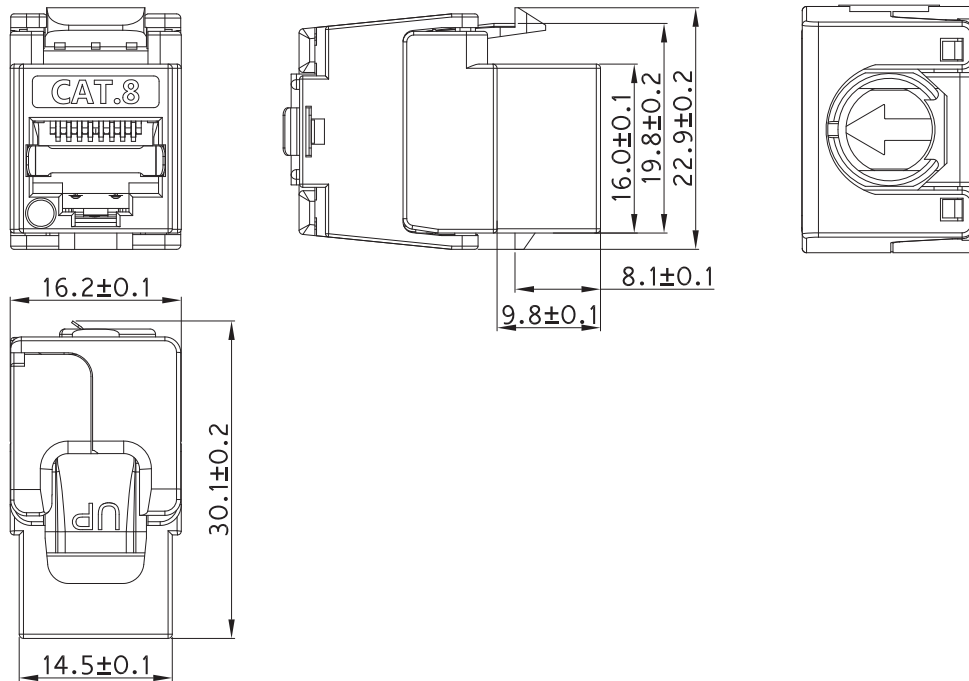
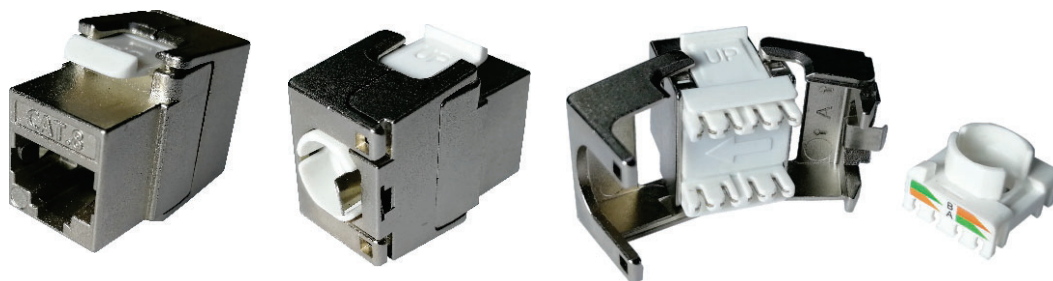


Presentation



Photo



Features

Full shielded with a rugged cast-encased rear, utilizing an innovative tool-free termination.

Easy, reliable and stable quality by inset-molding and press-fit assembly process.

Fits for 1U 24port and 1U 48 port keystone panel or faceplate. Suitable for cabling from the smallest home networks to very large data centers.

Electrical

Insulation Resistance:	≥ 500 MΩ
Contact Resistance:	≤ 20 mΩ
DC Resistance:	≤ 0.3 Ω
DC/AC Volt Endurance:	DC1000V/AC750V 1min

Mechanical

Mating cycles :	750 cycles minimum
IDC mating cycles :	20 cycles minimum
Operating temperature :	-10~60°C
Operating humidity :	10%~90%RH
Storage temperature :	-40°C TO 68°C

Physicals

Housing:	Zinc Die-Casting with high quality Nickel plating
Plastic Parts:	High quality engineering plastic
PCB:	FR-4, 1.2mm Thickness
Jack Wire:	0.35 mm Phosphor bronze gold over nickel plating
IDC conductor:	0.5mm Phosphor bronze, tin-plating
Contact compatibility :	accommodate 22 to 24 AWG solid
TIA Cat.8 Channel Test:	Worst Pair NEXT Headroom ≥ 2.0dB

Standards Verification

ANSI/TIA-568.2-D-2018;
ISO/IEC 11801-1-2017;
ISO/IEC 60603-7-81
RoHS Directive 2011/65/EU。