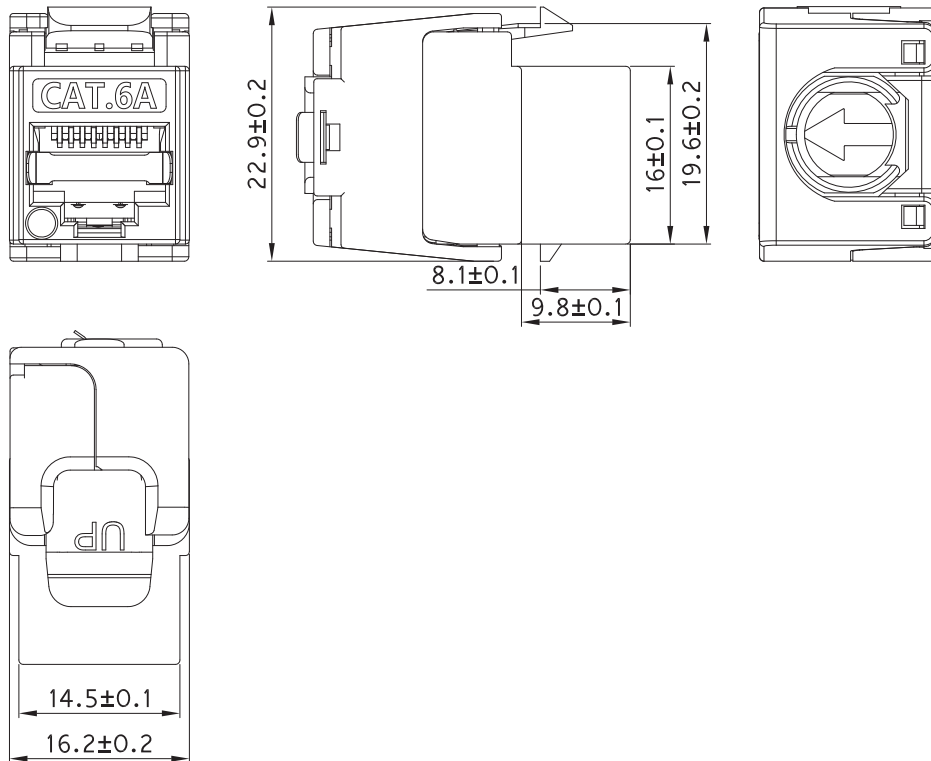
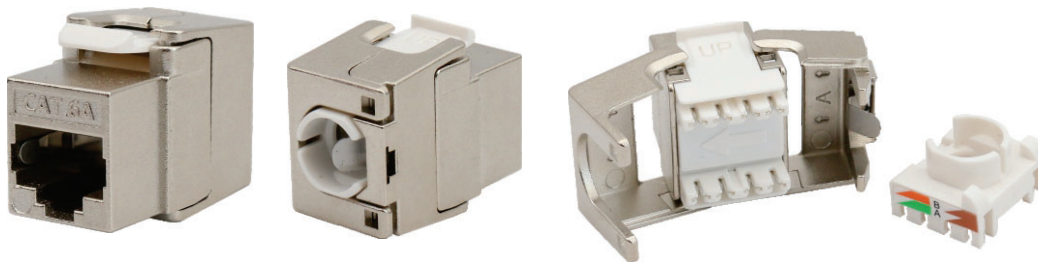


Presentation



Photo



Electrical

Current Rating:	1.5 Amps
Insulation Resistance:	≥ 500 MΩ
Contact Resistance:	≤ 20 mΩ
DC Resistance:	≤ 0.3 Ω
DC/AC Volt Endurance:	DC1000V/AC750V 1min

Mechanical

Mating cycles : 750 cycles minimum
 IDC mating cycles : 200 cycles minimum
 Operating temperature : -10~60°C
 Operating humidity : 10%~90%RH
 Storage temperature : -40°C TO 68°C

Physicals

Housing: Zinc Die-Casting with high quality Nickel plating
 Plastic Parts: High quality engineering plastic
 PCB: FR-4, 1.2mm Thickness
 Jack Wire: 0.35 mm Phosphor bronze gold over nickel plating
 IDC conductor: 0.5mm Phosphor bronze, tin-plating
 Contact compatibility :accomodate 23 to 24 AWG solid
 TIA Cat.6A Perm.Link Test: Worst Pair NEXT Headroom ≥3.0dB

Standards Verification

ANSI/TIA-568.2-D-2018;
 ISO/IEC 11801-1-2017;
 YDT926.3-2009;
 ISO/IEC 60603-7-51.