

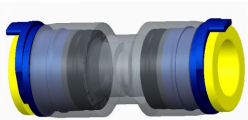


Tube connector straight

7b4 p-fit incl. secure clip

Article number: 510601

Date: 03-07-2020



Product characteristics

Type	Straight
Tube outer diameter 1	7
Tube outer diameter 2	7
Bore	4 mm
Calibre	3.9 mm
Length	39.5 mm
Outer diameter	14.5 mm
Weight (kg)	0.008

Application

Application	DB
-------------	----

Mechanical specification

Tensile load	400 N
--------------	-------



1

Logistical specifications

Unit	piece(s)
Packing unit	100



Tube connector straight - locking clip

ACE-DS-MCCO-SGD-v02-e

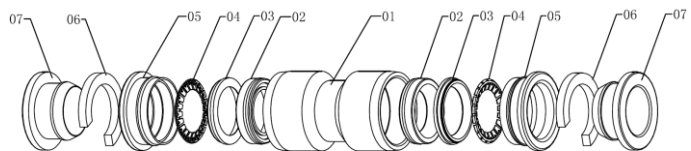
date : 06-08-2019

ACE provides a complete program of high quality tube connectors with functionalities like straight, end, reduction and gas-block. Connectors are available for duct install (DI) or direct burial (DB) applications.

The straight tube connector range composes components to join tubes of the same diameter. It is mostly applied in access networks where tubes are branched or at the location of subscribers.

The ACE straight connector with locking washer includes the following parts:

- 1 Plastic body (housing)
- 2 Sealing
- 3 Plastic ring
- 4 Grip teeth
- 5 Collar
- 6 Locking clip
- 7 Sleeve



Product specifications

Material:

Housing	Polycarbonate (PC)
Sealing	NBR
Plastic Ring	POM
Grip teeth	Stainless steel (SUS)
Collar	PC
Locking clip	POM
Sleeve	POM
Colour housing	Transparent
Tube outer diameter	Tube outer diameter should comply to connector diameter
Tube material	HDPE
Fixation principle	Push-fit

Mechanical specification

Nominal pressure	16 bar
Maximum pressure	30 bar
Number of connections	10 (locking washer must be replaced)

Environmental specification

Transport and storage temperature	-10 .. +50 °C
Installation temperature	-10 .. +50 °C
Operating temperature	-45 .. +65 °C
Recommended blowing temperature	-5 .. +35 °C
Outdoor exposure limit	12 months @ Central Europe
Water ingress test (0.5 bar during 168 hours)	No leaks
Tube assembly	No tooling required



Other specification

Tested according EN 50411-2-8

DTAG Approved
Connector cannot withstand white spirit

Features:

Direct buried applications

Marking that indicates the compatible mini tube

Compact size

Push-fit

No tools required

Transparent body to allow verification of the position of the mini tube in the connector

Related products

Please select the following link to receive an overview of end connectors: [link to end connectors](#)

Please select the following link to receive an overview of straight connectors: [link to straight connectors](#)

Please select the following link to receive an overview of reduction connectors: [link to reduction connectors](#)

Logistical specification

Packaging

Box