

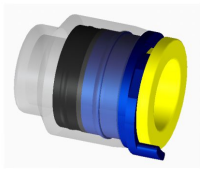


Tube connector end

7 p-fit incl. secure clip

Article number: 510616

Date: 03-07-2020



Product characteristics

| | |
|-----------------------|---------|
| Type | End |
| Tube outer diameter 1 | 7 |
| Length | 20.5 mm |
| Outer diameter | 14.5 mm |
| Weight (kg) | 0.005 |

Application

| | |
|-------------|----|
| Application | DB |
|-------------|----|

Mechanical specification

| | |
|--------------|-------|
| Tensile load | 400 N |
|--------------|-------|

Logistical specifications

| | |
|------|----------|
| Unit | piece(s) |
|------|----------|



1

Packing unit

100

Tube connector end - locking clip

ACE-DS-MCCO-EGD-v02-e

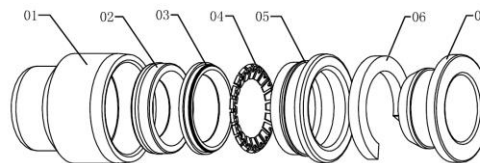
date : 06-08-2019

ACE provides a complete program of high quality tube connectors with functionalities like straight, end, reduction and gas-block. Connectors are available for duct install (DI) or direct burial (DB) applications.

The end tube connector range composes components to terminate tubes of different diameters. It is mostly applied in access networks where tubes are branched or at the location of subscribers.

The ACE end connector with locking washer includes the following parts:

- 1 Plastic body (housing)
- 2 Sealing
- 3 Plastic ring
- 4 Grip teeth
- 5 Collar
- 6 Locking clip
- 7 Sleeve



Product specifications

| | |
|---------------------|---|
| Material: | |
| Housing | Polycarbonate (PC) |
| Sealing | NBR |
| Plastic Ring | POM |
| Grip teeth | Stainless steel (SUS) |
| Collar | PC |
| Locking clip | POM |
| Sleeve | POM |
| Colour housing | Transparent |
| Tube outer diameter | Tube outer diameter should comply to connector diameter |
| Tube material | HDPE |
| Fixation principle | Push-fit |

Mechanical specification

| | |
|-----------------------|--------------------------------------|
| Nominal pressure | 16 bar |
| Maximum pressure | 30 bar |
| Number of connections | 10 (locking washer must be replaced) |

Environmental specification

| | |
|---|----------------------------|
| Transport and storage temperature | -10 .. +50 °C |
| Installation temperature | -10 .. +50 °C |
| Operating temperature | -45 .. +65 °C |
| Recommended blowing temperature | -5 .. +35 °C |
| Outdoor exposure limit | 12 months @ Central Europe |
| Water ingress test (0.5 bar during 168 hours) | No leaks |
| Tube assembly | No tooling required |



Other specification

Tested according EN 50411-2-8

DTAG Approved
Connector cannot withstand white spirit

Features:

Direct buried applications

Marking that indicates the compatible mini tube

Compact size

Push-fit

No tools required

Transparent body to allow verification of the position of the mini tube in the connector

Related products

Please select the following link to receive an overview of end connectors: [link to end connectors](#)

Please select the following link to receive an overview of straight connectors: [link to straight connectors](#)

Please select the following link to receive an overview of reduction connectors: [link to reduction connectors](#)

Logistical specification

Packaging

Box