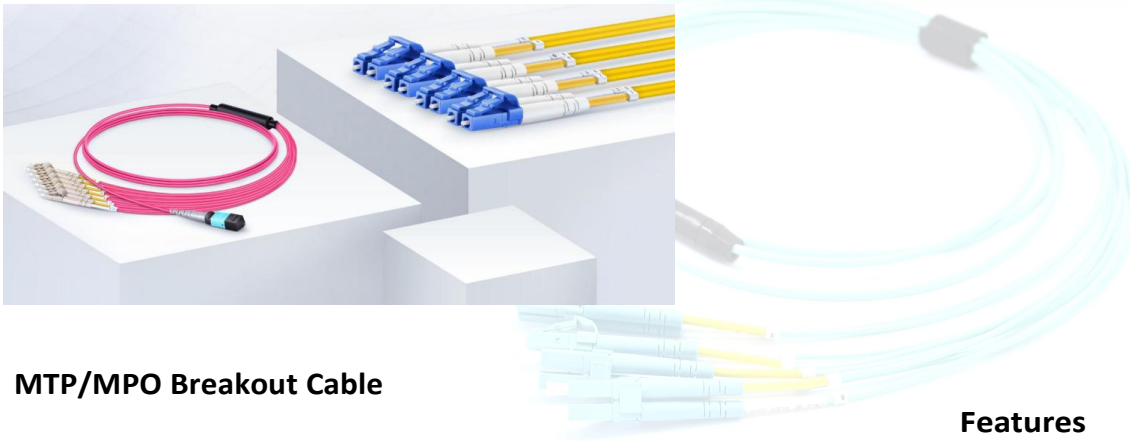
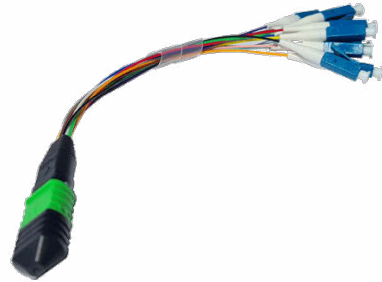


MTP/MPO Breakout Cable

IDEAL FOR DATA CENTER HIGH DENSITY CABLING SYSTEM

Designed for Storage Area Network (SAN) , Local Area Network (LAN) switch, Equipment Distribution Area (EDA) patch field applications.



MTP/MPO Breakout Cable

MTP/MPO breakout assemblies are used in parallel optics and duplex transmission cross connect systems to increase cable density between switch and server cabinets. Designed for high-density fiber patching in data centers, they ensure peak performance throughout your local area network. Allow for rapid deployment of high-density, multi-port patch field connectivity for Storage Area Network (SAN) applications.

Standards Compliance

- ROHS, CE (EN 50575 CPR) and ISO9001 Compliant
- EIA/TIA, Telecordia GR-326-CORE Standards
- IEC61754-7
- TIA 605-4 (FOCIS 5)
- YD/T1272.5

Features

- US Conec MTP® connector, Senko MPO Plus premium connector
- Corning Clearcurve® multimode fiber, SMF-28® Ultra optical fiber
- LC, SC, FC, ST connectors available
- OS2, OM4, OM3 available
- 0.35dB elite low loss connector
- Custom staggering options available on tails
- Factory terminated and tested
- Pulling eyes are provided as an option to protect the fiber ends during installation

Technical Specification

Construction	Description
Fiber Count	8-144 Fibers
Fiber Mode	Single mode: OS2 9/125µm Multimode: OM4 50/125µm, OM3 50/125µm
Fiber Brand	Corning ClearCurve® multimode fiber and SMF-28® Ultra optical fiber
Connector A	MTP Female, Male; MPO Female, Male
Connector Brand	US Conec MTP®, Senko MPO
Connector B	LC, SC, FC, ST
Polarity	Type A, Type B, Type C
Cable Jacket Ratings	Plenum (OFNP) Low Smoke Zero Halogen (LSZH) Riser (PVC)

Color Codes	MTP	MPO	LC
Cable Jackets	OS2: Yellow OM4: Magenta OM3: Aqua	OS2: Yellow OM4: Magenta OM3: Aqua	OS2: Yellow OM4: Magenta OM3: Aqua
Connectors	OS2: Green OM4/OM3: Aqua	OS2: Green OM4/OM3: Aqua	Single Mode: UPC Blue, APC Green Multimode: Beige
Boots	8 Fibers: Grey 12 Fibers: Black 24 Fibers: Red	8/12/24 Fibers: Black	Single Mode: UPC Blue, APC Green Multimode: Beige

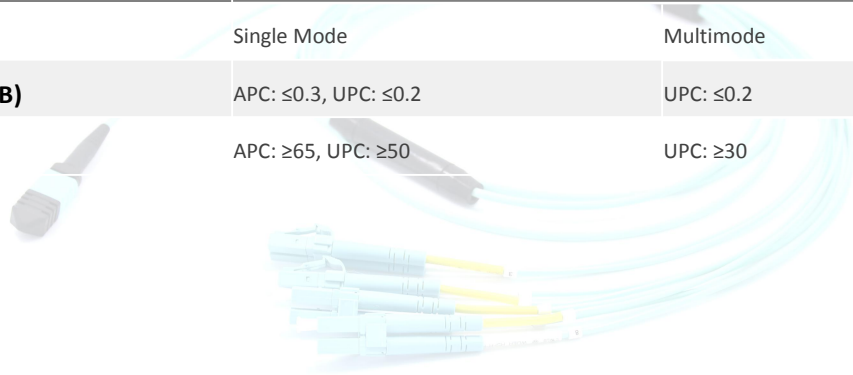
Physical Properties	Description
Cable Diameter	3.0mm
Breakout Leg	2.0/0.9mm
Breakout Length	0.5/0.3m
Minimum Bend Radius	Single Mode: 10.0mm, Multimode: 7.5mm
Operating Temperature	-10° C to +70° C
Storage Temperature	-40° C to +85° C

Technical Specification

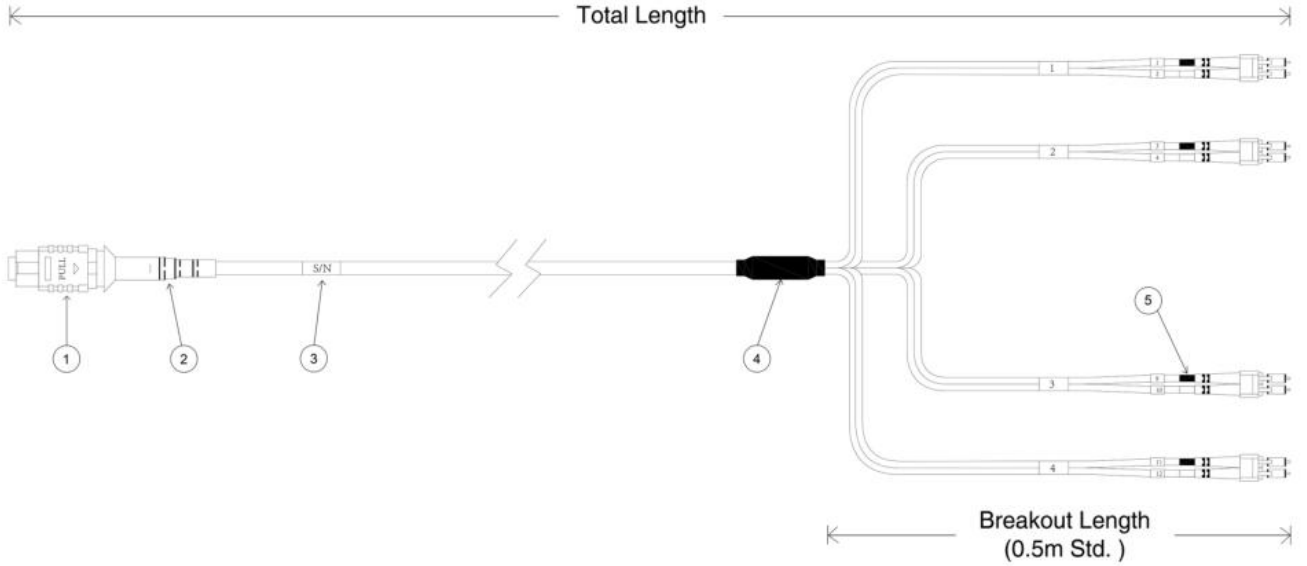
Construction	Description
Wavelength (nm)	Single Mode: 1310/1550 Multimode: 850/1300
Transmission Distance	OM4: 150m at 40/100G, 400m at 10G OM3: 100m at 40/100G, 300m at 10G
Connector	MTP/MPO

Fiber Mode	Single Mode	Multimode
Attenuation (dB/km)	≤0.32 at 1310nm ≤0.18 at 1550nm	≤2.3 at 850nm ≤0.6 at 1300nm
Insertion Loss (dB)	≤0.35	≤0.35
Return Loss (dB)	APC: ≥60, UPC: ≥50	UPC: ≥20
Connector	LC/SC/FC/ST	

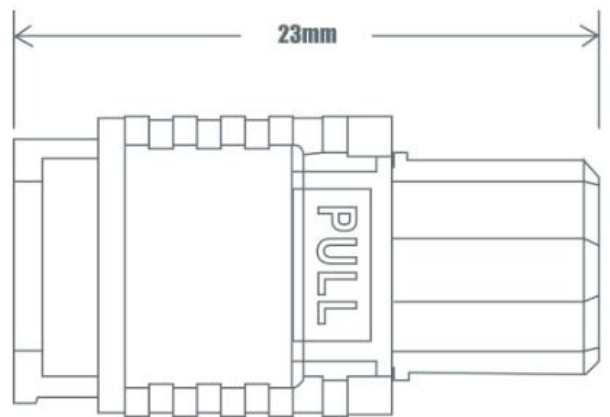
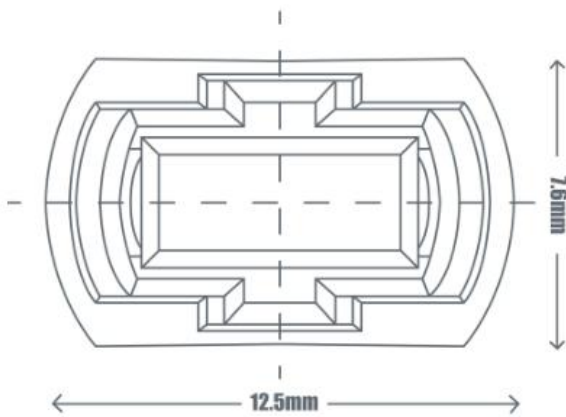
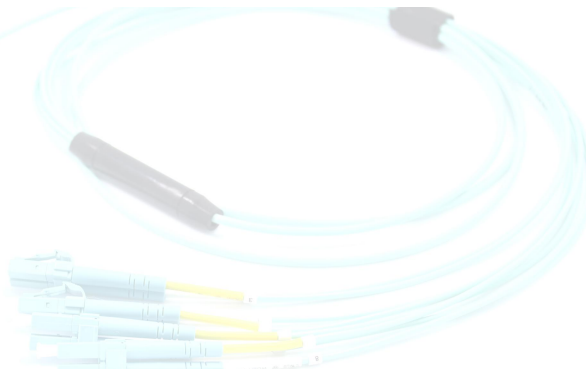
Fiber Mode	Single Mode	Multimode
Insertion Loss (dB)	APC: ≤0.3, UPC: ≤0.2	UPC: ≤0.2
Return Loss (dB)	APC: ≥65, UPC: ≥50	UPC: ≥30



Technical Drawing

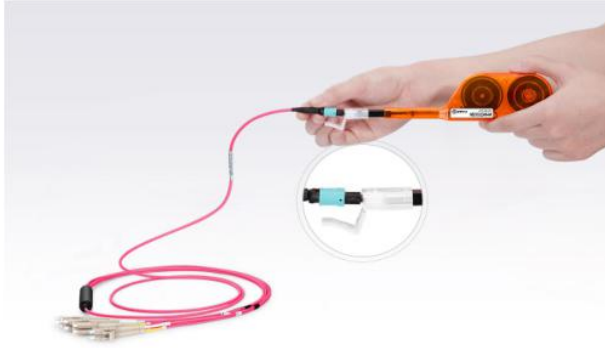


- 1. MTP/MPO Connector
- 2. Connector Boot
- 3. Serial Number Label
- 4. Fan Out Kit
- 5. LC Connector



Fiber Optic Cleaning

NEOCLEAN-M One-Push Cleaner



Characteristics

- For cleaning ferrules pinned or non-pinned.
- Designed for cleaning the ferrule end-faces of MTP/MPO connectors.
- Narrow design reaches tightly spaced MTP/MPO adapters.
- Cost effective tool for cleaning fiber end-faces without the use of alcohol.

CLE-BOX Fiber Optic Cassette Cleaner



Characteristics

- Made of non-alcohol superfine fiber ideal for fiber optic cleaning.
- Widely used in optical network maintenance, engineering or equipment.
- Cassette tapes are available for replacement after 500+ cleaning operations to ensure low cleaning cost.

ID

Description

YN3969
7

NEOCLEAN-M One-Push Cleaner for MPO/MTP Connector (600 cleans)

YN2638
8

CLE-BOX Fiber Optic Cassette Cleaner

www.dgroup.no