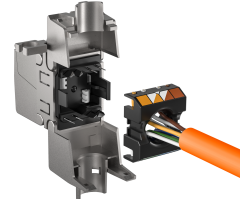
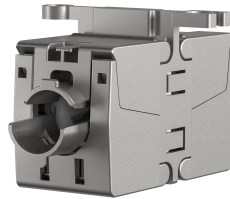
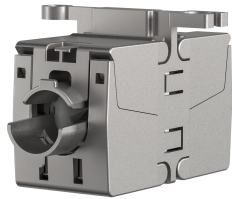
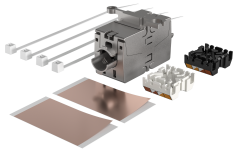
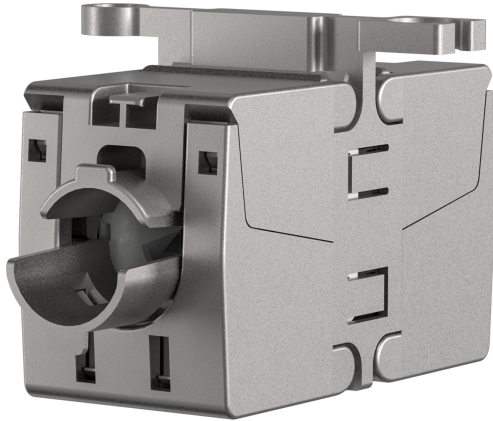


Connection module Cat.6A / Class EA 10Gbit/s

Class E_A



General data

The Class EA connection module provides high performance for 10 Gbit/s at small required space, combined with easy assembling without the need of special tools. Universal possibilities of mounting through screwing, linking. Optional 19" panel of up to 24 x modules provides multiple field of applications:
Connection of installation cable, e.g. in canals or ducts.
Connection of installation cable with patch cable for end-to-end links or consolidation point applications.

Features:

- Fully shielded zinc diecast bodyhousing
- Dimension (W x H x L) 18 x 26 x 39 mm
- Link performance 10 Gbit/s Class EA acc. to ISO 11801
- 2 x compact cable manager for AWG26/1..AWG22/1 and AWG26/7..AWG24/7
- Max. cable diameter: 8,5mm
- Pair management with colour code, printed on cable manager
- Reliable differentiation of cable managers by mechanical and colour assignment (plastic black / white) on the cable coupler and on cable managers
- PoE and PoE Plus according to IEEE802.3af/at
- 360° shield contact and strain relief independent from each other
- Gliding stored shield contact
- Screw- and line-up through loops at the side of the module
- 19" panel for holding of 24 x modules available as accessory

This datasheet was created automatically on 14-03-2024 . Technical changes reserved.

DATASHEET

Connection module Cat.6A / Class EA 10Gbit/s

Included in delivery:

1 x connection module, 2 x cable pre-sorter (black + white), 2 x copper foil, 2 x cable ties

Allgemeine Daten

AWG-range	26 - 22
Suitable for litz wire conductor	True
Suitable for degree of protection (IP)	IP20
Suitable for solid core	True
Connection type	LSA
Suitable for flat cable	False
AWG-range for litz wire conductor	26 - 24
Category	6A (TIA)
Max. cable diameter	8.5 mm
Special tool necessary	False
Suitable for round cable	True
Complaint to UL94	V-0

Mechanische Eigenschaften

Type of locking	Rastverriegelung
360° shield contact	True
Housing material	Zinc die cast
Shield contact and strain relief separate	False

Elektrische Eigenschaften

screened	True
----------	------

Available variants

ArtNr.	Bezeichnung	Colour
37597.1	Connection module Cat.6A / Class EA 10Gbit/s	silver